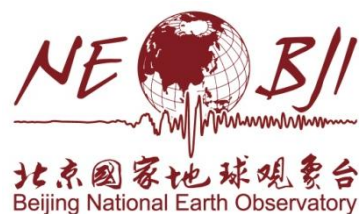


# Beijing National Earth Observatory

Wenquan Town, Handian District  
Beijing 100095, China

<http://www.neobji.ac.cn/>

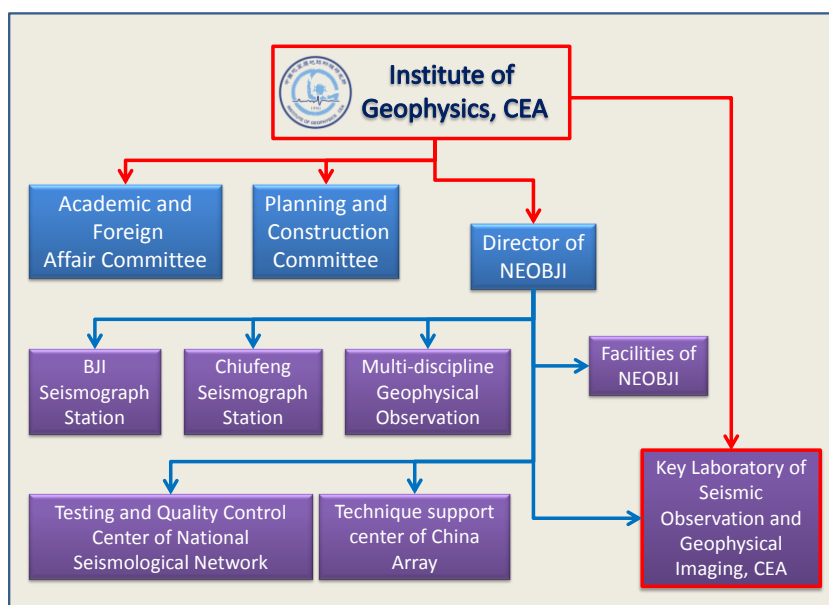


## Outline

Beijing National Earth Observatory (NEOBJI) is managed by the Institute of Geophysics (IGP), China Earthquake Administration (CEA), which is an important field arm of IGP and having held a leading role in earthquake and multi-disciplinary geophysical observation in China for many years.

NEOBJI has a long glorious history.

- ⊕ **YEAR 1930.** The first seismic station in mainland China, which was installed by Chinese seismologists in 1930. After the Wiechert seismograph and Galitzin-Willip seismograph were deployed, the first seismograph was recorded on Sept.30, 1930.
- ⊕ **YEAR 1930 to YEAR 1937.** 2427 earthquakes were recorded. Bulletins and observation reports were published monthly and the data were exchanged with seismological agencies all over the world, which makes NEOBJI as a landmark of the modern seismological observation in China.
- ⊕ **YEAR 1957.** Renamed as Beijing Observatory, and obtained earthquake waveform data since June.1, 1957, with the installed 513-type mid-strong seismometer. The geomagnetism records was first obtained in 1957.
- ⊕ **YEAR 1982.** A 202m-depth cave for geophysical observation was completed with total inner length of 317.5m.
- ⊕ **Year 1982 to Year 2010.** Seismometers, a gravimeter, and tilt-meters were installed in the cave, while geo-magnetometers and instruments for water level were installed in the yard and down in boreholes.
- ⊕ **YEAR 1984.** Be awarded the “International Earth Observation Centenary” Silver Medal by IAGA in recognition of the outstanding contribution in Geomagnetic Observation.
- ⊕ **FROM 1986.** Be a station of CDSN/GSN, sharing seismic data with the world.
- ⊕ **FROM 1990s.** Be a GSETT beta station, and a CTBTO/IMS auxiliary station.
- ⊕ **FROM 2000.** Be a China National Backbone Field Station, honored by the Ministry of Science and Technology of the People's Republic of China.
- ⊕ **From 2010.** Be a base for International Cooperation, honored by the Ministry of Science and Technology of the People's Republic of China.

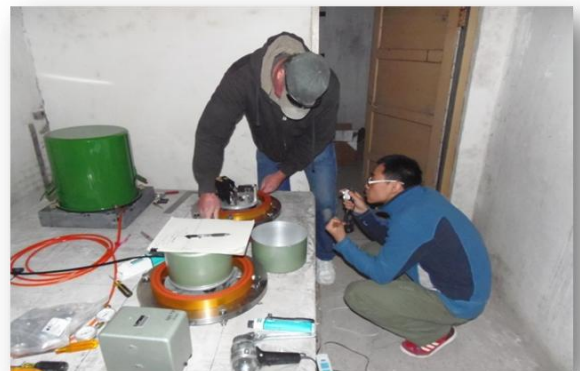
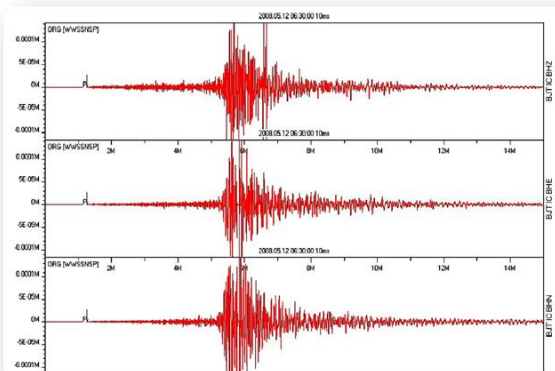


## NEOBJ: practices and records

- Geomagnetic observation: IAGA Silver medal
- Seismological observation: Chinese magnitude standard
- Pioneering digital seismology in China: the CDSN and its upgrading
- The ChinArray center



### Geomagnetic Observation at NEOBJ



Waveforms recorded on NEOBJ for the Wenchuan Earthquake (M8.0, 2008) and the photo during CDSN upgrade in 2013



The technical support center of the ChinArray

## NEOBI for today

- The seismological lab for the Chinese national seismograph network
- Technical standard and quality control for observation and monitoring
- The national observatory as the central node of array, network, and observatory clusters
- Geophysical observation and monitoring in the time of accelerating urbanization



Testing and quality control Center of the China National Seismological Network



Magnetic field-free space for calibrating instruments



Technical center of ChinArray



Key Laboratory



Instrumental Testing Center



NEOBI Observation Center

Photos of some of the buildings of the Beijing National Earth Observatory (NEOBI)

## **NEOBJI for next 10 years**

- The observatory as a lab for research, development, and training
- Information service to the public
- The observatory as the base for knowledge transfer and public understanding
- Facilitating international collaboration through the observatory